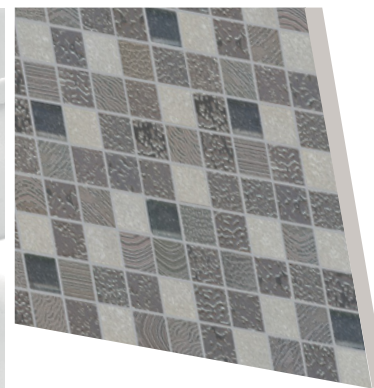


Reaton[®]

mc²

12

VANNAS
ISTABAS



THE FIRST-EVER AUTHORS COLLECTION BY LATVIAN MASTERS OF INTERIOR AND DESIGN



IN ORDER TO PROMOTE THE COLLABORATION BETWEEN LATVIAN INTERIOR DESIGNERS AND THE WORLD'S LEADING MANUFACTURERS AND DEALERS OF SANITARY WARE AND FINISHING MATERIALS, THE mc² CENTRE OF INTERIOR DESIGN AND DELICACIES HAS BROUGHT TOGETHER 19 LATVIAN INTERIOR EXPERTS AND DESIGNERS TO COMPETE FOR THE BEST AUTHORS' EXPOSITION OF BATHROOM DESIGN. WHILE SEARCHING FOR CREATIVE INSPIRATION, THE DESIGNERS TRAVELLED TO ITALY AND GERMANY WHERE THEY VISITED TEUCO, GARDENIA ORCHIDEA, I CONCI, VILLEROY & BOCH, TOTO, BURGBAD, HUPPE, DORNBRACHT, HANS GROHE AND OTHER WELL-KNOWN PRODUCERS OF FINISHING MATERIALS AND SANITARY WARE. FINALLY, THE 12 COMPETITION ENTRIES WERE EVALUATED BY AN INTERNATIONAL JURY, AND THE AUTHORS OF THE THREE BEST BATHROOM DESIGNS WERE AWARDED WITH A TRIP TO JAPAN.

THE 12 BATHROOMS PROJECT IS ANOTHER STEP TAKEN BY mc² TOWARDS ITS LONG-TERM GOAL, WHICH IS BECOMING ONE OF THE BEST RETAILERS OF LUXURY ITEMS IN EUROPE. AS AN ENTERPRISE, WE HAVE NEVER BEEN AFRAID TO LOOK BEYOND THE BORDERS OF LATVIA AND WORK WITH AN INTERNATIONAL SCOPE.

WE ARE ALREADY COLLABORATING WITH DESIGNERS AND CUSTOMERS ACROSS EUROPE, AS THE LATVIAN MARKET OF LUXURY GOODS IS AND WILL REMAIN A RELATIVELY SMALL ONE.

WE HAVE GAINED AN INVALUABLE EXPERIENCE BY CREATING THE AUTHORS' COLLECTION OF DOOR DESIGNS FROM SOME OF THE LEADING ARCHITECTS OF LATVIA. TODAY WE ARE USING THIS KNOWLEDGE IN A MUCH BROADER AND MORE AMBITIOUS PROJECT – THE 12 AUTHORS' EXPOSITIONS OF BATHROOM FURNISHINGS. SINCE BATHROOM IS ONE OF THE MOST EXPENSIVE AND COMPLEX AREAS IN A DWELLING, THE FURNISHING OF THIS ROOM OFTEN DEMANDS A GREAT DEAL OF TIME AND MONEY. OUR TASK, THEREFORE, IS TO MAKE THIS PROCESS MORE PLEASANT AND COMFORTABLE FOR OUR CUSTOMERS. VISITING 12 OUTSTANDING AND DISTINCTIVELY DIFFERENT BATHROOM DESIGN EXPOSITIONS CREATED BY LATVIAN DESIGNERS CAN BE A GOOD SOURCE OF INSPIRATION TO OUR CUSTOMERS WHEN FURNISHING THEIR OWN HOMES.

BORISS GLUHMANIS
THE PRESIDENT OF REATON





THE PINNACLE OF MASCULINE CONFIDENCE. THERE IS NOTHING SUPERFLUOUS IN THIS MODERN AND ELEGANTLY ASCETIC BATHROOM. ITS AUTHOR HAS MANAGED TO CREATE A UNIQUE EFFECT OF SPACIOUSNESS COMBINED WITH FLAWLESS FUNCTIONALITY. THE FINISH OF THE ROOM MAINLY CONSISTS OF SMOOTH, GLANCED SURFACES IN TEMPERATE AND PRACTICAL COLOURS – GRAY STONE, BROWN WOOD, WHITE CERAMICS AND SILVERY METAL. A SET FOR THE MAN IS DESIGNED TO FIT THE CHARACTER OF A POISED INDIVIDUAL, A PERFECTIONIST WHO ALWAYS GETS WHAT HE WANTS.



Duralight® - an innovative acrylic-based composite material patented by Teuco. The Duralight® formula is unique, as are the technologies used by Teuco for its creation. It is an ideal material for creative uses, innovative designs, and jobs that withstands the test of time in the private and commercial sectors, from hotels to stores, from yachts to airports....

Manufacturer:
TEUCO
Collection:
OUTLINE



PĒTERIS TULLS
INTERIOR DESIGNER

A SET FOR THE MAN



Teuco Outline The harmonious light and movement of this collection designed by Carlo Colombo completely transform the style of a bathroom, offering surprisingly new design. Asymmetric lines beautifully highlight the inherent beauty of a material's irregularity and allow for the natural movement of flowing water to become visible.



AN ABSOLUTE HARMONY, PEACE OF SOUL AND LIMITLESS LOVE. THIS MINIMALISTICALLY DESIGNED BATHROOM WAS CREATED FOR A WOMAN AND A MAN. THE IDEA FOR ITS DESIGN CAME TO THE ARTISTS DURING THEIR TRIP TO ITALY WHERE THEY SAW STONE IN A NEW LIGHT AND FELL IN LOVE WITH THIS NATURAL ELEMENT, THE WARMTH OF WHICH PERVADES EVERY DETAIL OF THE SILENT ROOM. THE LIGHT, GENTLE TONES OF IVORY CONJURE UP SENSUAL FEELINGS, MAKING THIS BATHROOM SUITABLE FOR SOLITARY MEDITATION AS WELL AS A ROMANTIC TÊTE-À-TÊTE.



Teuco Feel - infallible personality. The charm of contemporary sculpture and the enormous potential within a material combined with Giovanna Talocci's elegant design evoke a sense of natural stone.



AGNES RUDŽĪTE
INTERIOR DESIGNER

TATJANA VLASOVA
PHOTOGRAPHER

SILENT ROOM



Dornbracht Tara – a contemporary interpretation of a design icon. The evolution of design, architecture, a new finish, and color. Elegance enhanced by the nuances of the pure design of perfection, geometry, and symmetry.



JAPAN FROM THE EYES OF EUROPE. THIS MODERATELY AESTHETIC BATHROOM DESIGN WAS INSPIRED BY THE WORLD-FAMOUS JAPANESE WRITER HARUKI MURAKAMI WHO HAS SPENT A SIGNIFICANT PART OF HIS LIFE OUTSIDE JAPAN, THE POPULARITY OF THIS AUTHOR IN THE WEST SURPASSING EVEN THAT WHICH HE HAD GAINED IN HIS HOMELAND. THE BATHROOM NAMED AFTER MURAKAMI IS CHARACTERISED BY ITS OWN CONTEMPORARY STYLE WITH DARK AND DEEPLY SATURATED COLOURS, INCLUDING AN AVANT-GARDE BLACK PARQUET WALL FINISH.



Toto Neorest Series/LE for the Luminist material possesses unique characteristics that transform your bathroom into a healing oasis of peace and harmony. Luminist – an exclusive epoxy resin based material developed by Toto that is visually reminiscent of frosted glass, while being extremely safe and thermally resistant.



ZANE TETERE
ARCHITECT, DESIGNER

NATĀLIJA JANSONE
FASHION DESIGNER

HARUKI



WASHLET technology – Toto has developed a washing system through an expandable barrel that reaches a completely new level of hygiene and comfort. Warm water cleans much more effectively than toilet paper. Water temperature and stream pressure can be regulated with a remote, while the actual barrel is automatically cleaned before and after each use. Has an energy efficient setting. Each lavatory visit is revolutionized by the world's most progressive Clean Technology concept.

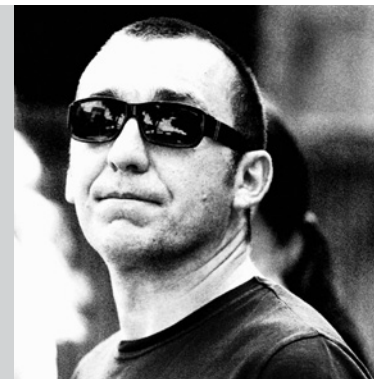
Manufacturer:
TOTO
Collection:
NEOREST



A REST AFTER THE BATTLE. THIS BATHROOM, DESIGNED IN A ROBUSTLY MASCULINE, EVEN SLIGHTLY SPARTAN STYLE, EMBODIES THE AUTHOR'S UNDERSTANDING OF THE TRUE VALUES IN LIFE – STRENGTH OF THE SPIRIT AND UNITY WITH NATURE. THE ROOM IS FINISHED WITH MATTE WOOD AND NATURAL STONE IN DARK SHADES, PROVIDING A PERFECT COMPLEMENT TO THE PRISTINE LINES OF FAUCETS FROM THE SUPERNOVA COLLECTION BY THE GERMAN MANUFACTURER DORNBRACHT, WHILE THE WIDE MIRROR SURFACES FORM A TRUE HARMONY WITH CERAMICS OF THE JEWELHEX COLLECTION.



The **Toto JEWELHEX** collection draws inspiration from the noblest jewel – the beauty of the diamond. Modern luxury in the bathroom is realized through the detailed likeness of crystal edge forms and the precise design of the collection.



ALEKSANDRS KIPĪAŅI
INTERIOR DESIGNER

AKIRA



Dornbracht SUPERNOVA – a high quality sculptural faucet. Supernova is the bright birth of a new star. This light is reflected in Supernova's edges and multifaceted surface. The Sieger Design faucet is an architectural mirror, just as the figure of the faucet is mirrored in architecture. With this individuality, your bathroom will not go unnoticed.



PEACE AND REFRESHMENT IN THE EMBRACE OF WATER. THE DESIGN OF THIS BATHROOM IS DOMINATED BY THE SNOW-WHITE COLOUR WHICH SYMBOLISES LUCIDITY OF SPIRIT AND PURITY OF BODY. ITS AUTHORS HAVE ENHANCED THE SPECIAL AMBIENCE OF THEIR MASTERPIECE BY ADDING SOFT MUSIC, SUITED FOR RELAXATION, THUS EXPRESSING THE BELIEF THAT BATHROOM IS A PLACE WHERE ONE CAN PURIFY NOT ONLY THE BODY BUT THE SOUL AS WELL.



Phoenix Design Pura Vida - modern, as it does not age : its rounded corners and intrinsic curves create a feeling of lightness within your bathroom.



GALINA MIZGIRJOVA
INTERIOR DESIGNER

VIKTORIJA JAVKINA
INTERIOR DESIGNER

Manufacturer:
DURAVIT
Collection:
PURA VIDA



The more complex and developed our world becomes, the more we desire to turn to an emotionally new way of „seeing“ things. In the Pura Vida collection, minimalism acquires a fresh feminine touch. All lines are astoundingly light, evoking a feeling of relaxation. Created for those who are not inspired by prestige, but rather by modern form and the joy of life.

STILL WATER



NATURE ENTERING THE CITY. THIS PICTURESQUE BATHROOM CONSISTS OF TWO CONTRASTING SECTIONS THAT REFLECT THE DIVERSITY BETWEEN THE CALM FLOW OF RURAL LIFE AND THE DYNAMIC RHYTHM OF THE CITY, FINDING SOME TRUE BEAUTY IN BOTH OF THESE WORLDS. THE ORGANIC SIDE, WITH BATH AS THE CENTRAL OBJECT, IS CREATED FOR RELAXATION AND PEACE, AND THEREFORE IT CONSISTS MAINLY OF LIGHT COLOURS, WHILE THE URBAN SIDE, COLOURED IN SLIGHTLY DARKER SHADES, EMPHASISES QUICKNESS AND PRACTICALITY TO SUIT THE BUSY EVERYDAY LIFE OF CITY-DWELLERS.



Axor Bouroullec – absolute freedom of combination. Let your personal ambitions go free. More than 70 items for the bathroom – ranging from faucets and accessories to sinks and baths that give you the opportunity to find your own individual interior design solution. „Feel Free To Compose“, the motto of French designers Ronan & Erwan Bouroullec, best illustrates the collection's essence and invites you to take part in the creation of your own unique bathroom.



KATRINA STIRNA
INTERIOR ARCHITECT

Manufacturer:

AXOR

Collections:

**STARCK ORGANIC
BOUROLLECC**



URBANIC ORGANIC



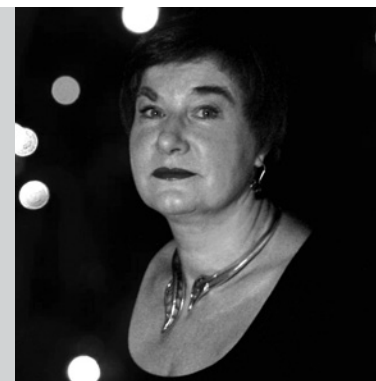
Nature is the keystone of design inspiration for the **Axor Starck Organic** collection. A robust design language with a sophisticated look and feel. How many thoughts are contained within the bathroom collection? And how much heart? How can we make life in the bathroom better, and how can we improve the quality of our lives? How can we give respect to nature and the world of tomorrow? Axor Starck Organic balances design and technology, ecology and economy, heart and mind.



A RETURN TO THE NATURE. WITH A CREATIVE APPLICATION OF THE OPPORTUNITIES PROVIDED BY MODERN TECHNOLOGY, THE AUTHOR HAS TURNED THIS BATHROOM INTO A HAVEN OF PEACE WHERE ONE CAN ESCAPE FROM THE EVERYDAY HUSTLE AND BUSTLE. THE MAIN OBJECT OF THIS BATHROOM IS A GLASS WALL WITH A PASTORAL LANDSCAPE OF THE LATVIAN COUNTRYSIDE JUST A SHORT WHILE BEFORE THE SUMMER SOLSTICE. THE CHANGE OF ILLUMINATION ALLOWS THE VIEWER TO EXPERIENCE A FULL DAY FROM SUNRISE TO SUNSET AND HEAR THE BIRDS SINGING...



MY NATURE – Mother Nature is our guest. The true beauty of nature can also be shown within a confined space. The new collection of Villeroy&Boch welcomes you with its refreshing lightness and exciting filigree forms whose inspiration comes from the outdoors.



DACE ZELTIŅA
INTERIOR DESIGNER

Manufacturer:
VILLEROY&BOCH
Collection:
MY NATURE



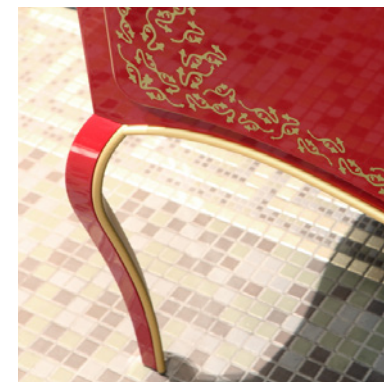
BACK TO THE NATURE



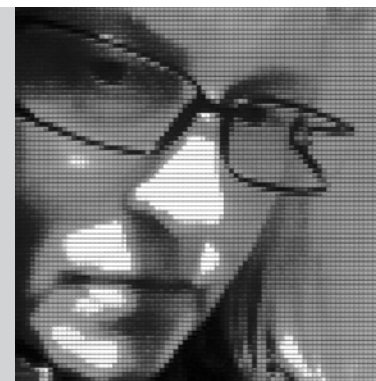
Villeroy Boch My nature – the embodiment of nature : delicate floral tones, natural materials, combined with functionality and simplicity. The mood of the country is brought into the modern home, apartment, or building. The interior acquires a lightness and harmonious synthesis of nature and practicality.



LIFE IS A THEATRE! THIS BATHROOM DREW INSPIRATION FROM THE LEGENDARY LATVIAN MOTION PICTURE “TEĀTRIS” (THEATRE). THE BOLD COLOUR SCHEME, LUXURIOUS FINISHING MATERIALS AND SOME PIQUANT THEMES ENDOW THIS ROOM WITH A THEATRICAL, EROTIC CHARACTER. THE ARTISTIC MIRROR, MELLOW LIGHTING AND THE BRIGHT RED DRESSER BRINGS UP ASSOCIATIONS WITH THE PRIVATE MAKE-UP ROOM OF A STAGE STAR.



Villeroy & Boch Amadea Royal supplements the existing Amadea. A classic style that maintains the boundary between neo-romanticism and retro classic. The bodies of the fixtures are made from painted anodized metal and covered with 22 karat gold. The facades are adorned with red and gold ornaments – arabesques. Furniture handles are made from Murano glass, and drawer interiors are velvet.



Manufacturer:
VILLEROY&BOCH
Collection:
AMADEA



MARINA KRAVČENKO
INTERIOR DESIGNER

THEATER



Dornbracht Square faucet with exclusive handles in the form of faux jewels.



A VISION OF ENDLESS PLAINS. THIS EXTRAORDINARY BATHROOM IS DECORATED IN A PROFOUNDLY MINIMALISTIC STYLE AND EQUIPPED WITH MATT BLACK SANITARY WARE FROM THE CRONO COLLECTION. THE LIGHT, BROWNISH YELLOW SHADES OF FINISHING CREATE A MONOLITHIC IMPRESSION AND EVOKE CLEAR ASSOCIATIONS WITH THE ENDLESS SUNLIT DESERT. IT IS LIKE A SCENOGRAPHIC VISION OF THE SMOOTH, CEASELESS FLOW OF TIME THAT RUNS THROUGH THE FINGERS LIKE SAND.



RC40 – a concept for a room where Burgbad differs from traditional bathroom furniture concepts. It is a future-oriented alternative for architects, bathroom designers, and homeowners. Furniture becomes the room, and the room becomes furniture. It is not merely furniture, it is design, and it is not merely a detail, it is the whole that creates a refined interior design.



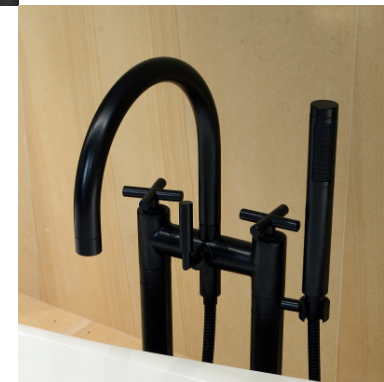
SANTA MEIKULANE
INTERIOR DESIGNER



REINIS LIEPIŅŠ
ARCHITECT



SAND DUNE



Tara White/Black Edition
For the first time, matte-white and matte-black faucet finishes are offered. Matte and satin Tara – a new avant-garde that is defined not only by form, but also by surface. Pure architectural colors – black and white, dedicated to the Bauhaus style.



AN ODE TO THE FEMININE. THIS STYLISED BATHROOM-BOUDOIR WITH THE ROMANTICISM AND EXQUISITENESS CHARACTERISTIC ONLY TO THE BEGINNING OF THE 20TH CENTURY, IS THE DESIGNERS' TRIBUTE TO THE ERA OF DIVAS. THE INSPIRATION FOR THIS INTERIOR DESIGN PROJECT WAS DRAWN FROM MARLENE DIETRICH, ONE OF THE MOST BRILLIANT ACTRESSES OF ALL TIMES, DESCRIBED BY THE FILM DIRECTOR JOSEF VON STERNBERG AS THE MOST BEAUTIFUL WOMAN HE HAS EVER HAD THE PLEASURE OF MEETING.



Diva – fuel your imagination with a collection of bathroom fixtures that demands attention. Absolutely sensual, perfectly harmonious, and attractively rich in contrasts. Artfully designed so that each encounter is an event. The interaction of the functionality of ideal form and pure art.

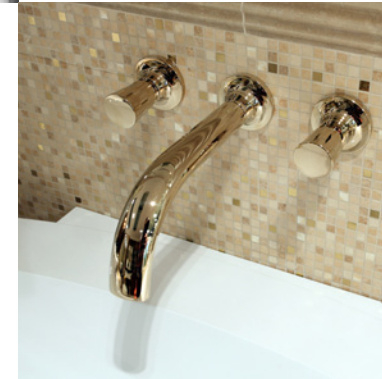


Manufacturer:
BURGBAD
Collection:
DIVA

AIJA VITOVSKA
INTERIOR DESIGNER

IVETA JUHŅĒVIČA
INTERIOR DESIGNER

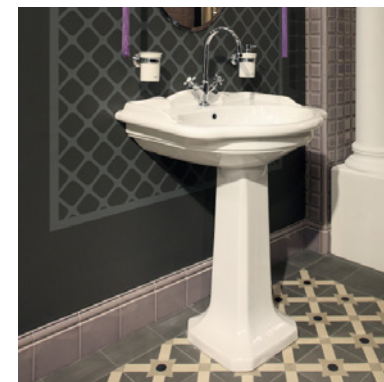
THE DIVA



Dornbracht LaFleur – Stylish and elegant. Emotionally confident. Floral elements inspired by nature provide a wonderfully romantic touch to your emotional gamut.



LIFE IS A CELEBRATION. THIS VILLA STYLE BATHROOM IS LIKE A DREAM ABOUT NEVER-ENDING HOLIDAYS. THERE IS NO SIGN OF PLAINNESS AND ROUTINE HERE. THE BATH, SURROUNDED BY COLUMNS AND MIRRORS, IS A THRONE FOR FEMININITY, BUT THE PATTERNED TILE FLOOR RESEMBLES A CARPET OF FLOWERS, CREATED FOR THE GENTLE TOUCH OF A WOMAN'S FEET.



Ceramica Globo – Paestum is a concept of elegance coupled with an absolute chic, based on the past with classic motifs, yet transcending time with its feel towards the future. Defining its program as a bathroom style in which a combination of charm and age-old style dominate. Rich materials and fine lines fill the space with an exclusive atmosphere.



Manufacturer:
CERAMICA GLOBO
Collection:
PAESTUM



LARISA
POMEŠČIKOVA
INTERIOR DESIGNER

ANNA
DJANČENKO
INTERIOR DESIGNER

ROMAN HOLIDAY



Axor – Montreux – a stylish collection that returns us to the beginning of the 20th century. A Belle Epoque spirit dominates with its romantic gestures. There is a hint of the wonderful resort on the shores of Lake Geneva, as well as that of a modern collection, harmoniously integrating into both traditional and contemporary interiors.



THE ULTIMATE BRITISH GENTLEMAN. THE DESIGN OF THIS BATHROOM IS AS FLAWLESS AS THE FAMOUS AGENT 007, WHOM EVEN THE QUEEN TRUSTS WITH HER LIFE. A REMARKABLE SPATIAL SYMMETRY AND IRREFUTABLE LOGIC IN THE CHOICE OF FINISHING MATERIALS TURNS THIS ROOM INTO A GOAL FOR EVERY SELF-RESPECTING MAN. AND WHICH WOMAN WOULD BE ABLE TO RESIST SUCH A MAN?



Imperial Bathrooms – Radcliffe Radcliffe's classic collection with its square forms provides a stylish accent to your bathroom. For those who desire quality and individuality. Representing the highest achievements of British craftsmen.



Manufacturer:
IMPERIAL BATHROOMS
Collection:
RADCLIFFE



ALLA AMUSINA
INTERIOR DESIGNER

JEVGENIJS ZEFIROVS
INTERIOR AND FURNITURE
DESIGNER

AGENT 007



Imperial Bathrooms - Niveau
Niveau has a unique essence, inspired by Art Deco. Eight-cornered handles that perfectly match the faucet's angular forms. Excellence guaranteed.

TOTO

KEUCO

HOESCH

VASCO®
HEATINGCONCEPTS

HATRIA 

 DURAVIT
LEBEN IM BAD

HÜPPE


TB
Made in England

thermic
DESIGNER RADIATORS

GUSTAVSBERG


AXOR®
hansgrohe

 Margaroli
1949

IBB
INDUSTRIE BONOMI



DECOR WALTHER

SPRINZ
LEBEN MIT GLAS


Villeroy & Boch
1748

zehnder

KERASAN

Salgar

iSideal
STANDARD

 burgbad

Cristal et Bronze
PARIS

zierath

 RUBINETTERIE
Ritmonio

SAMUEL HEATH
since 1820


VOLEVATCH

JADO

■ GEBERIT

 CORDIVARI®

IMPERIAL

KNIEF

DORN
BRACHT


Herbeau
L'Art du Sanitaire depuis 1857

 recor
bathrooms

ZUCCHETTI.

 FANTINI
RUBINETTI

teuco

AN·TRAX IT